

EMI/EMC FILTER

TB3(Plastic Case) SERIES



Features

- 3-Phase Filters (Potted with Epoxy Resin)
- Easy connection and installation
- Excellent filtering characteristics for both differential mode and common mode

Applications

- Digital equipments
- Suitable for FA equipments
- Computerized washing machines
- Industrial equipments like UPS, inverters, converters

Specifications

MODEL	Rated Voltage (AC)	Rated Current	Leakage Current (500V, 60Hz)	Operating Temperature
TB3-5006CD1K**	3Φ X 500V	6A	21.0mA max.	-25°C to +100°C Including temperature rise Derating Curve
TB3-5010CD1K**		10A		
TB3-5016CD1K**		16A		
TB3-5020CD1K**		20A		
TB3-5030CD1K**		30A		
TB3-5040CD1K**		40A		

※ Many variations in X and Y capacitor value are available with approvals. For the details, consult with local agent.

Note

Withstand Voltage : 2800V DC for 1 minute between line and ground

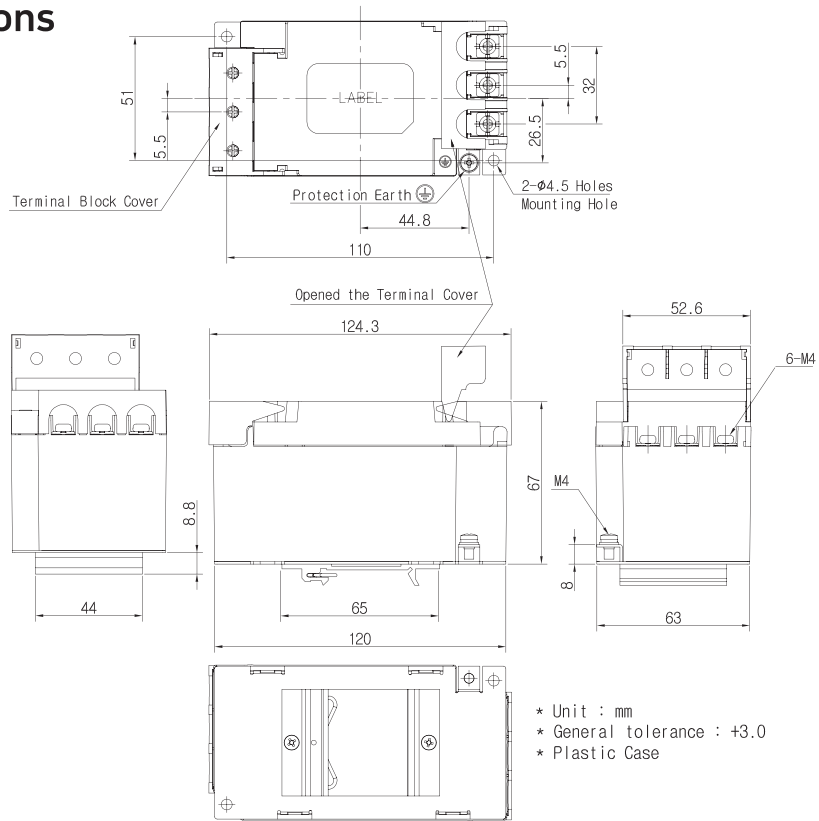
Insulation Resistance : 300 Mohm min. at 500V DC between line and ground

Model Number Construction

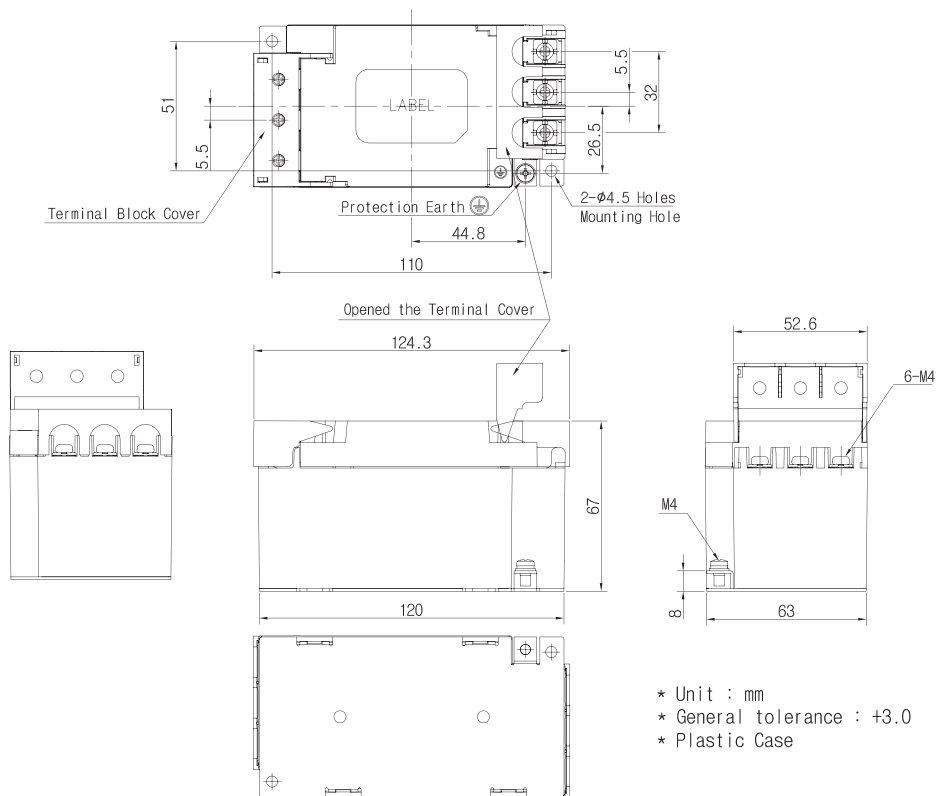
TB3	5	006	C	D	1	K	H	D
Series Name (3 Line, 1 Stage)	Rated Voltage 5 : 500V AC	Rated Current 006 : 6 A 010 : 10 A 016 : 16 A 020 : 20 A 030 : 30 A 040 : 40 A	The Number of Cores C : 1 EA	Circuit Type	CX Value 1 : 1.0uF 2 : 2.2uF A : 0.1uF B : 0.22uF C : 0.33uF D : 0.47uF	CY Value 1 : 1000pF 2 : 2200pF 3 : 3300pF 4 : 4700pF 6 : 6800pF H : 0.022uF J : 0.033uF K : 0.047uF	Core Type Null : Ferrite Core H : Nano Core	Suffix Null : Blank D : Din Rail

Shapes and Dimensions

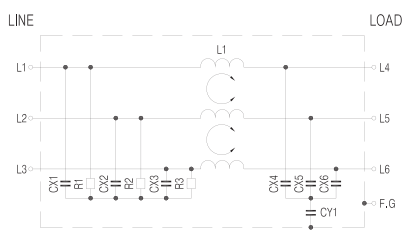
TB3-***** Type



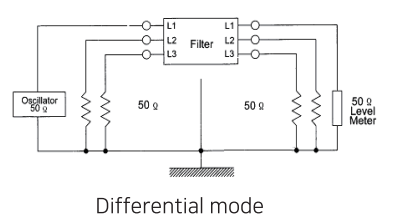
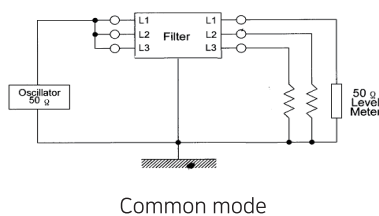
TB3-*****D Type



Circuit Diagram



Measurement Configuration



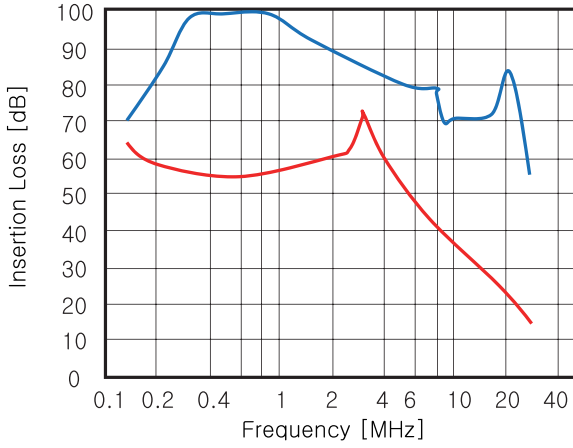
Attenuation Characteristics

Common mode (—)

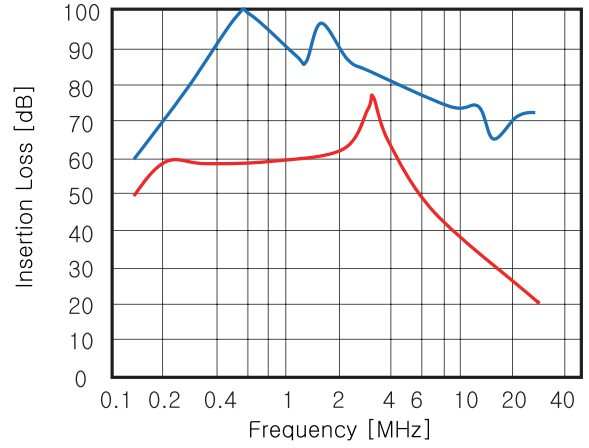
Differential mode (—)

TB3-5***CD1K Series

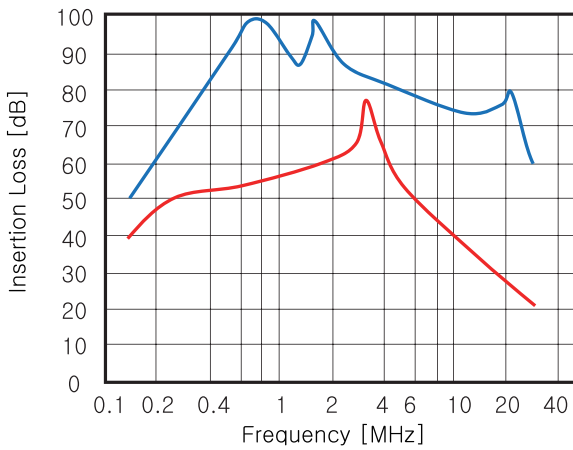
TB3-5006CD1K



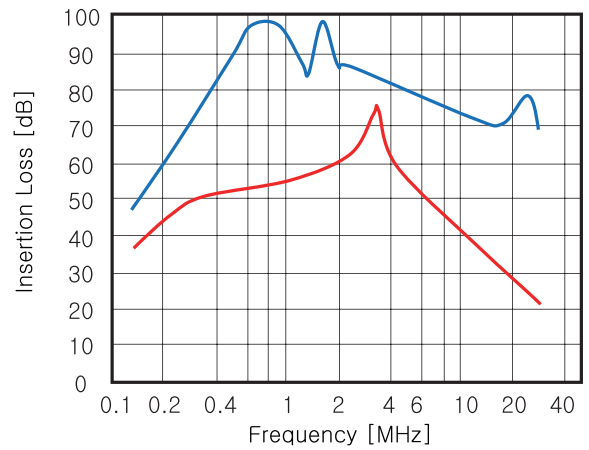
TB3-5010CD1K



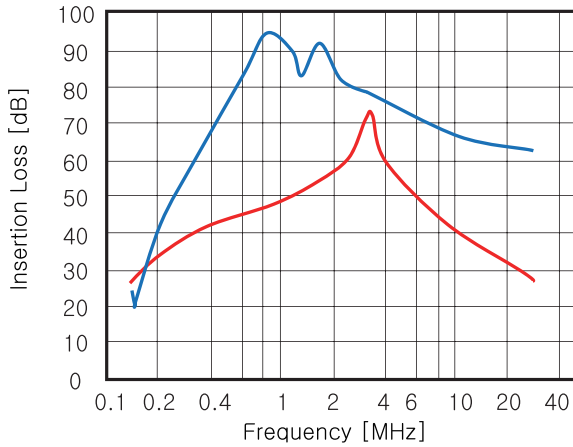
TB3-5016CD1K



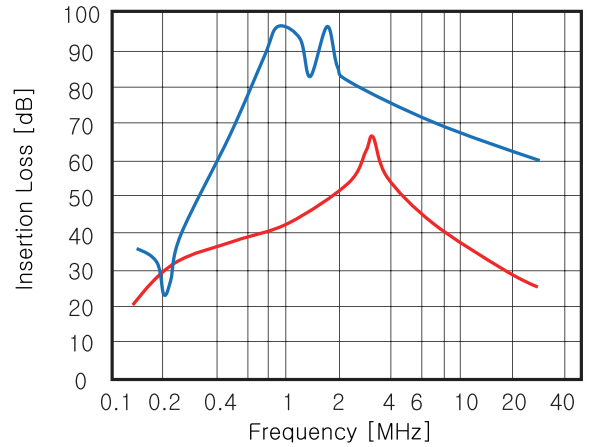
TB3-5020CD1K



TB3-5030CD1K



TB3-5040CD1K



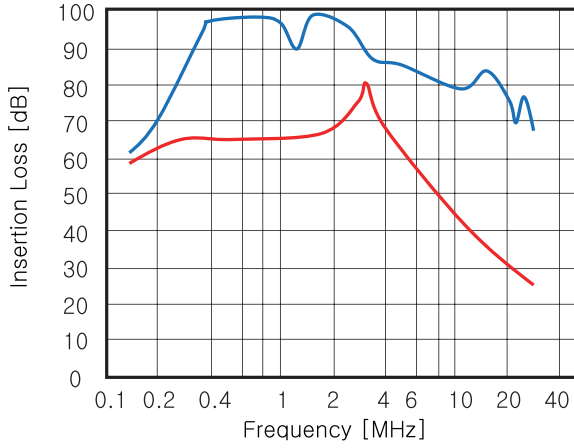
Attenuation Characteristics

Common mode (—)

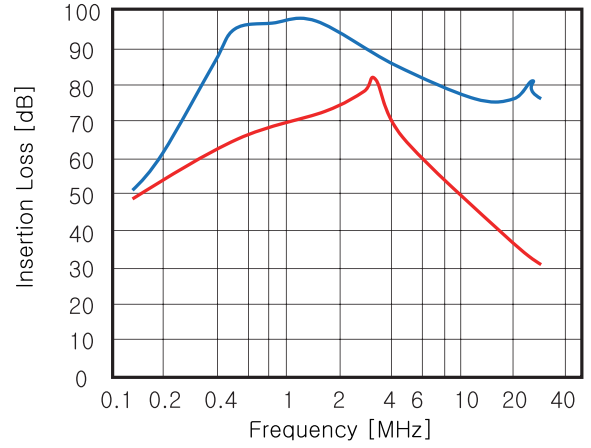
Differential mode (—)

TB3-5***CD1KH Series

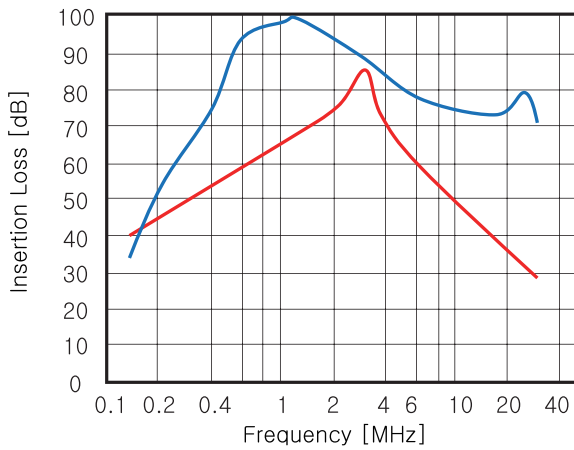
TB3-5006CD1KH



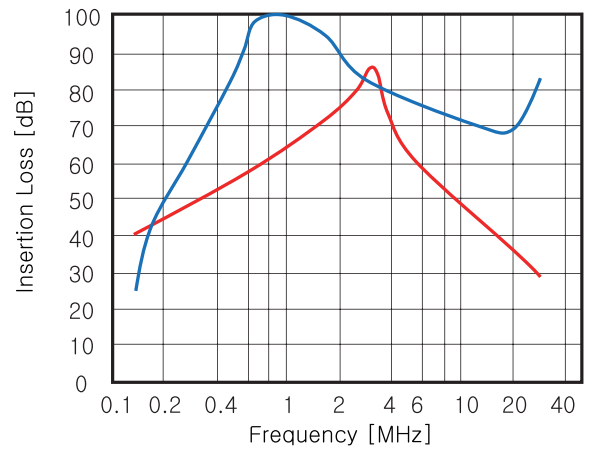
TB3-5010CD1KH



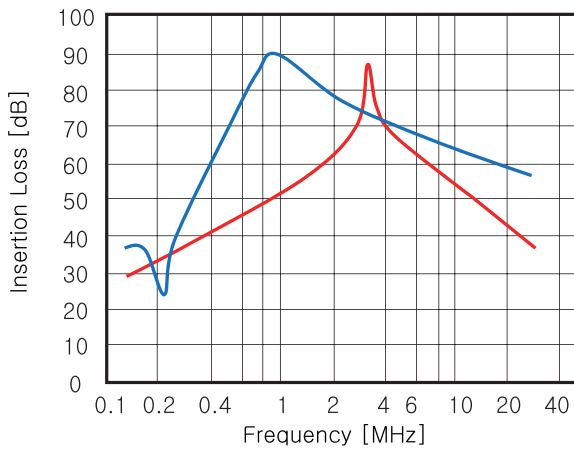
TB3-5016CD1KH



TB3-5020CD1KH



TB3-5030CD1KH



TB3-5040CD1KH

