

EMI/EMC FILTER

TB6-B SERIES



Features

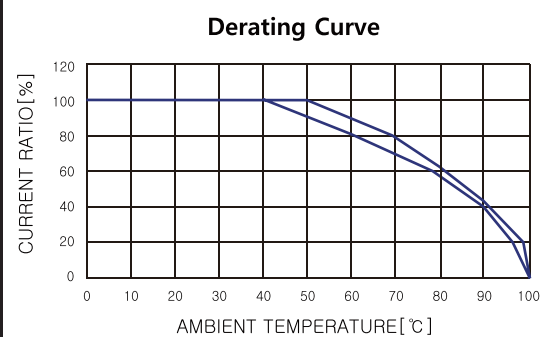
- 3-Phase filters(Potted with epoxy resin)
- Good shield effect by using metal case
- Excellent filtering characteristics for both differential mode and common mode
- Safety : ENEC, CE, SEMKO, KC
(Except for : TB6-B***LASH)

Applications

- Industrial equipment such as CNC machine, inverter, converter, telecommunication equipment, FA equipment, elevator, etc.

Specifications

Model	Rated Voltage AC	Rated Current	Voltage Drop Max (Each Phase)	Temperature Rise
TB6-B006NBDC	3Φ×440V	6A	1.0 V	-25°C to +100°C Including temperature rise
TB6-B010NBDC		10A		
TB6-B010LBEL		10A		
TB6-B016NBDC		16A		
TB6-B020NBDC		20A		
TB6-B030NBDC		30A		
TB6-B040As		40A		
TB6-B040A2				
TB6-B060LAs				
TB6-B060LA1		60A		
TB6-B060LASH				
TB6-B080LAs				
TB6-B080LA1		80A		
TB6-B080LASH				
TB6-B100LAs				
TB6-B100LA1	100A			
TB6-B100LASH				
TB6-B150LAs				
TB6-B150LA1	150A			
TB6-B150LASH				
TB6-B200LBs				
TB6-B200LB1	200A			
TB6-B250LBs				
TB6-B250LB1	250A			
TB6-B400LBs	400A			
TB6-B400LB1				



※ Many variations in X and Y capacitor value are available with approvals.
 TB6-B*****1 : Standard Type (Y Capacitor Value 10,000pF)
 TB6-B*****s : Used for CNC Machines
 TB6-B010~B030N(L)BDC : *Used for Servo Driver System
 For the details, consult with local agent.

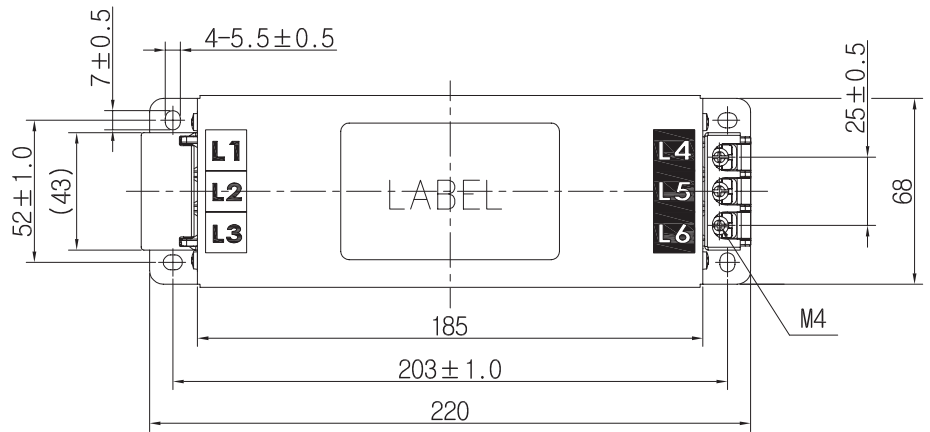
Note : Test Voltage: 3000VDC for 1 minute, line to ground
 Insulation Resistance: 300MΩ minimum at 100VDC, line to ground
 Weight: 1.3Kg for TB6-B006**/B010**/B016**/B020**/B030**
 2.2Kg for TB6-B040A*
 4.0Kg for TB6-B060/080/100LASH
 4.5Kg for TB6-B060LA*/B080LA*
 4.3Kg for TB6-B100LA*
 6.0Kg for TB6-B150LA*/TB6-B150LASH
 8.2/8.5Kg for TB6-B200LB*/B250LB*
 12.2Kg for TB6-B400LB*

Model Number Construction

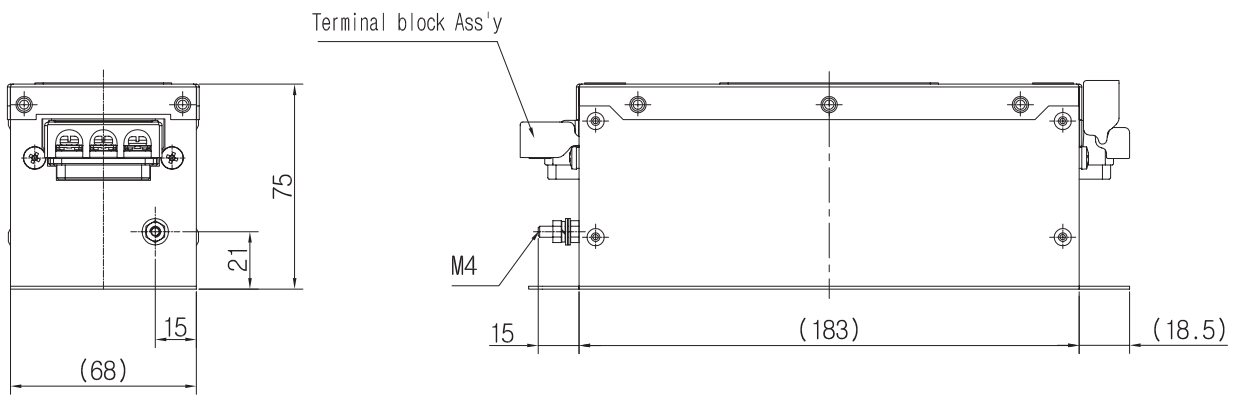
TB6	B	060	LA	S	H
Series name : 3 Phase, 3Line Filter	Input/Output B:Terminal Block	Rated Current 060 = 60 A 080 = 80 A 100 = 100 A 150 = 150 A	Circuit Stage LA = 1 Stage LB = 2 Stage	Suffix S = Standard 1 = Y-Capacitor 10,000pF	Characteristic Option Null = General H = High Attenuation

Shapes and Dimensions

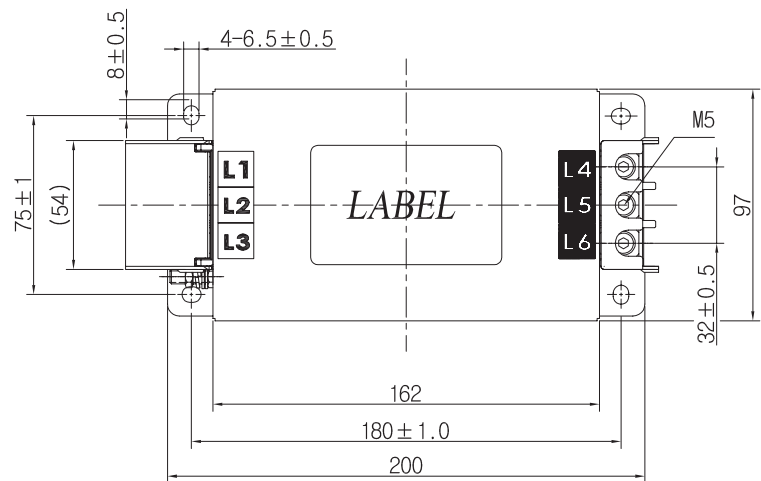
TB6-B006N(L)B**~TB6-B030NB**



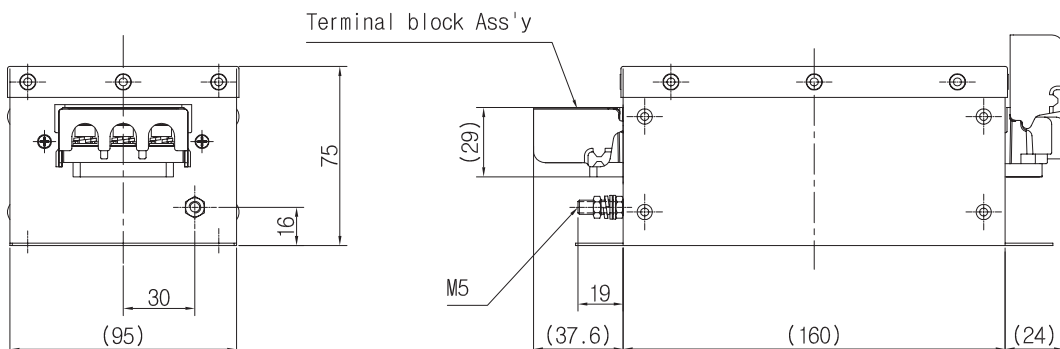
- * Unit : mm
- * General tolerance : ±3.0
- * Metal Case



TB6-B040LA*

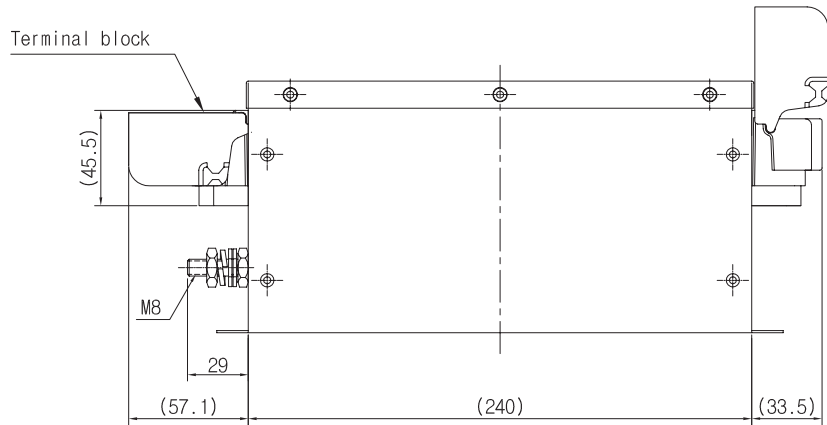
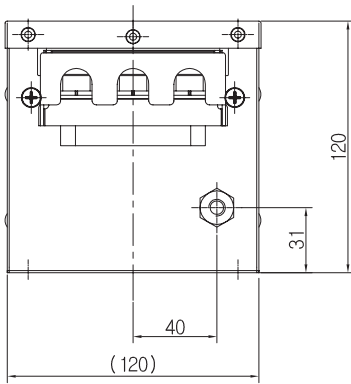
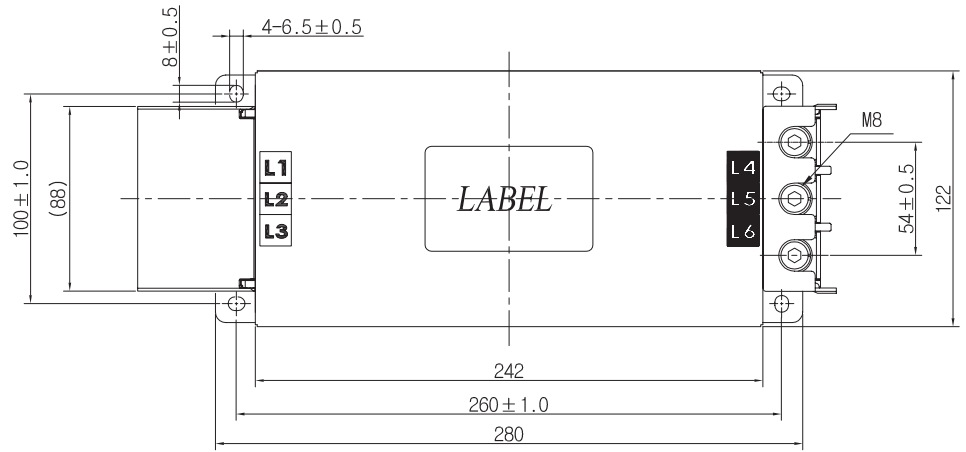


- * Unit : mm
- * General tolerance : ±3.0
- * Metal Case



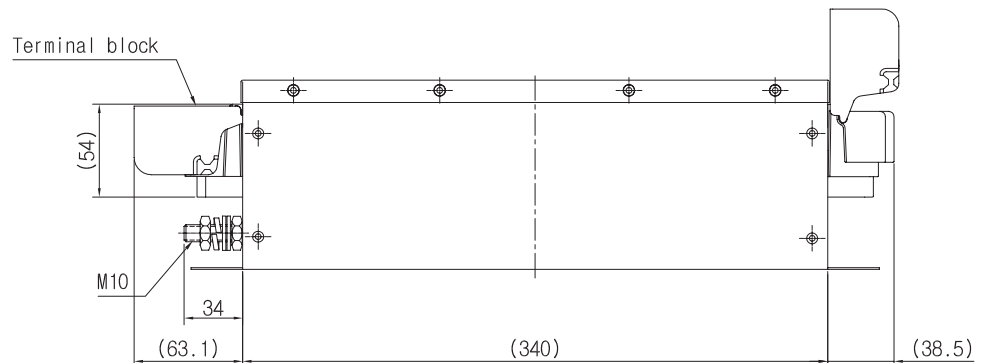
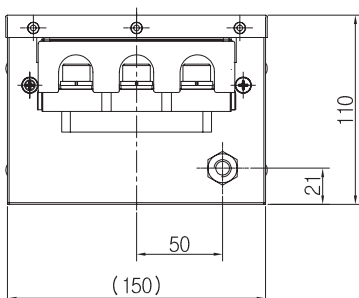
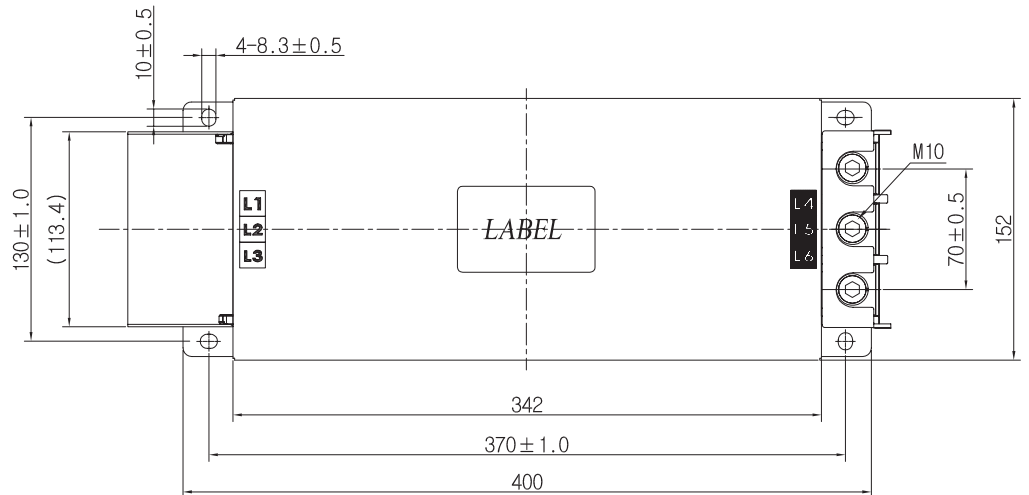
TB6-B150LA*

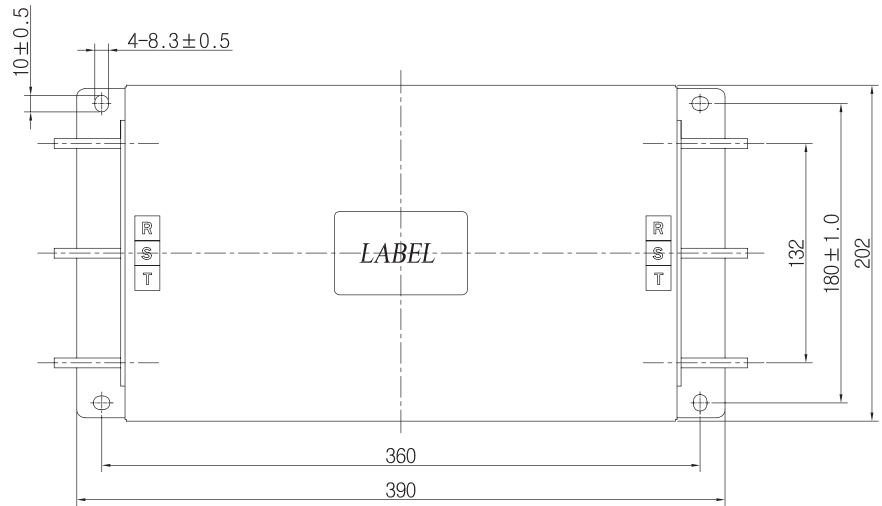
- * Unit : mm
- * General tolerance : ± 3.0
- * Metal Case



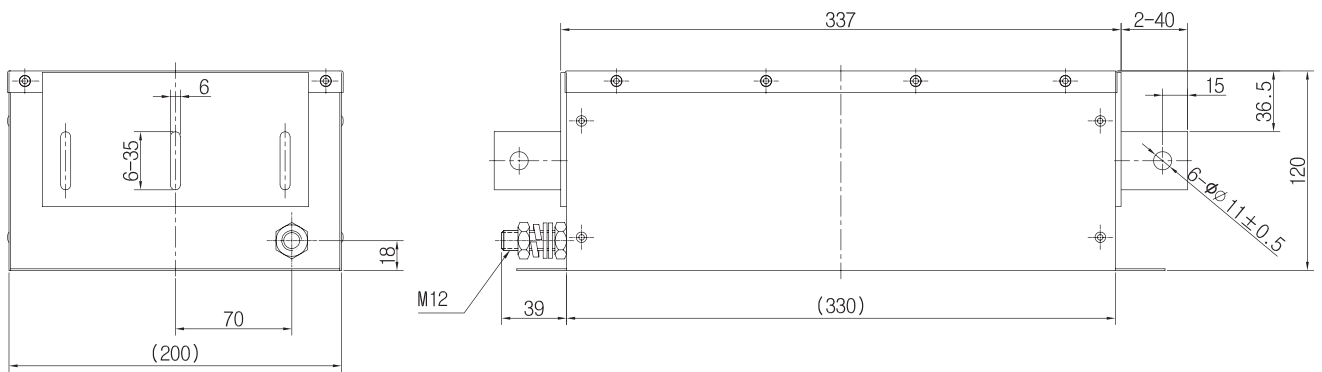
TB6-B200LB* & TB6-B250LB*

- * Unit : mm
- * General tolerance : ± 3.0
- * Metal Case

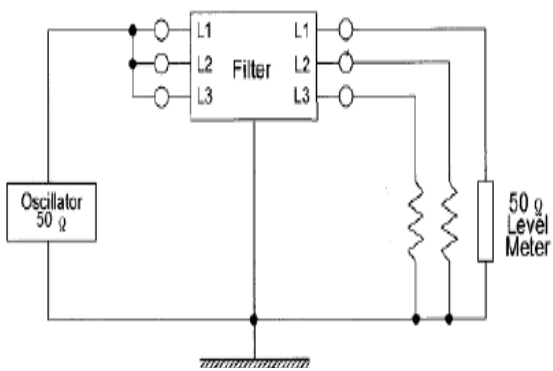




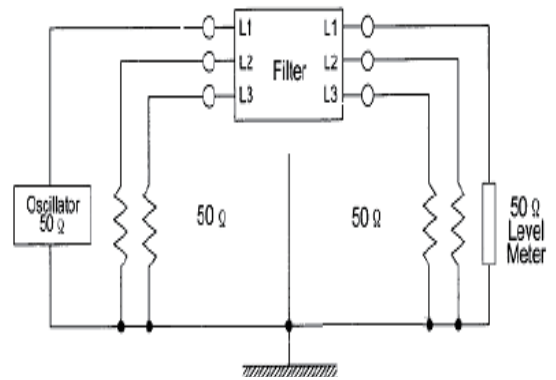
- * Unit : mm
- * General tolerance : ± 5.0
- * Metal Case



Attenuation Measuring Method



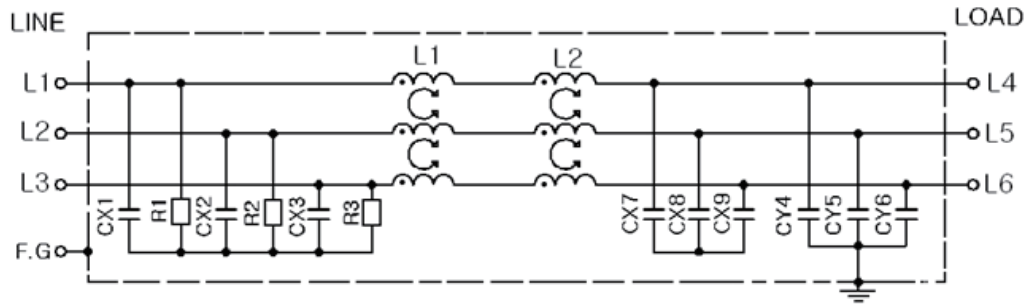
Common mode



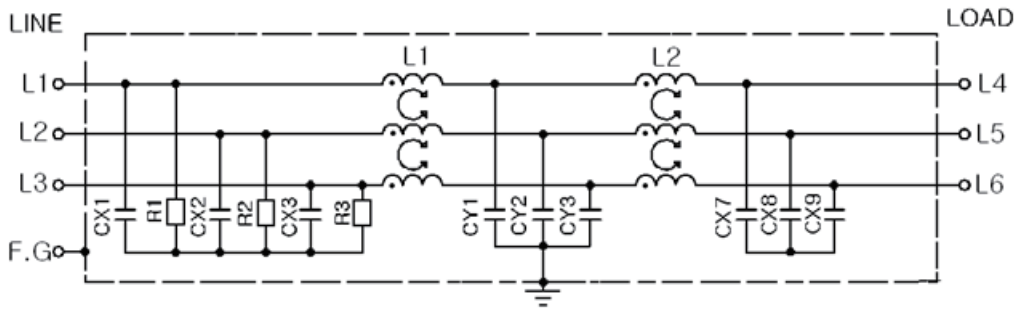
Differential mode

Circuit Diagram

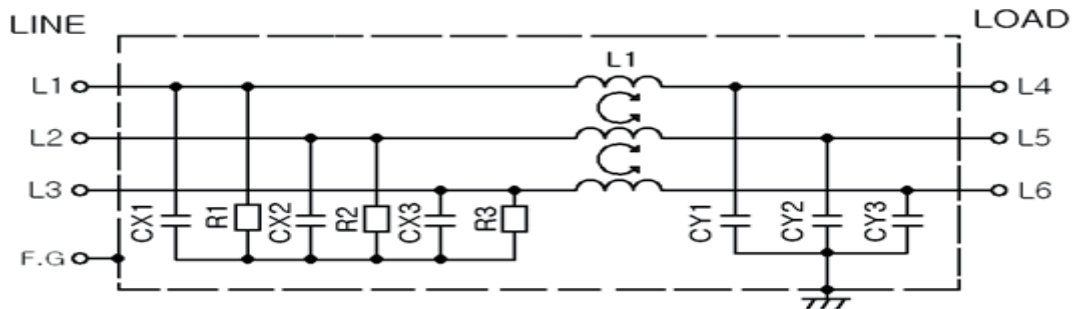
Only TB6-B010LBEI



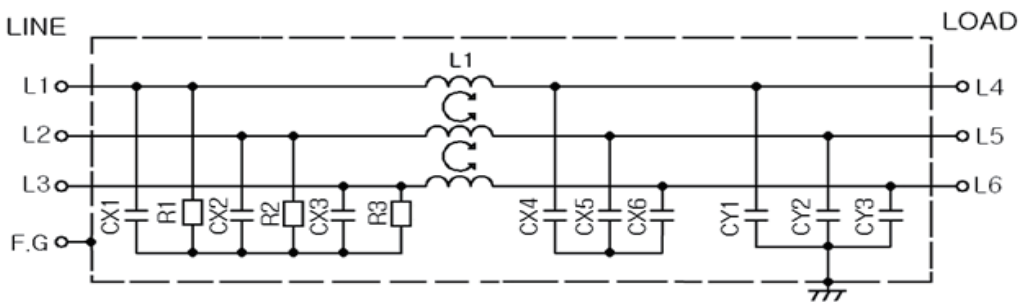
TB6-B006NBDC~TB6-B030NBDC



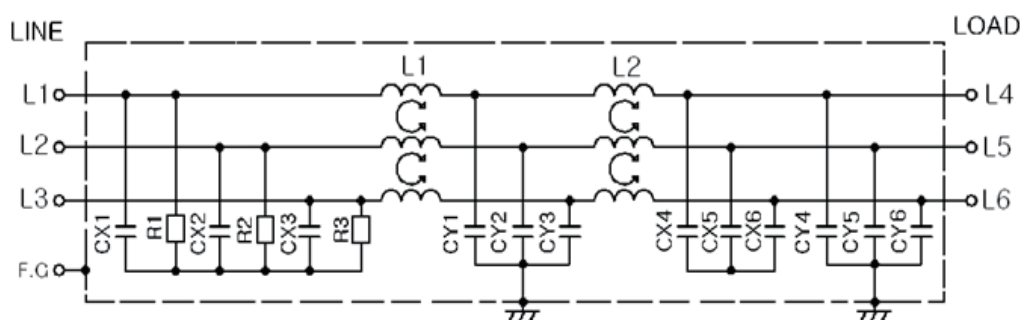
TB6-B040A*



TB6-B060LA** ~ TB6-B150LA**



TB6-B200LB* ~ TB6-B400LB*

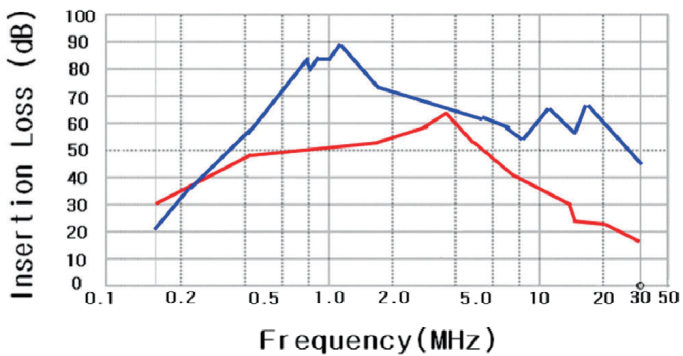


Attenuation Characteristics

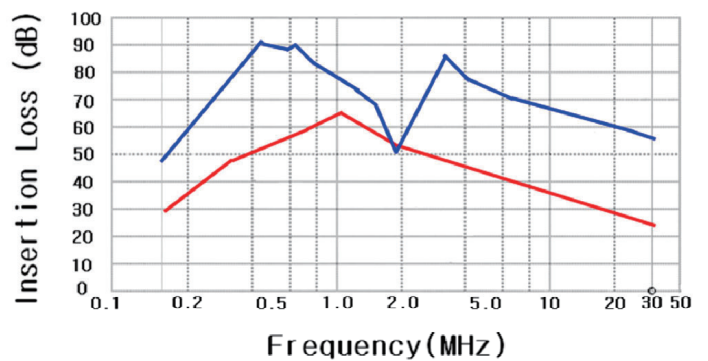
Common mode (—)

Differential mode (—)

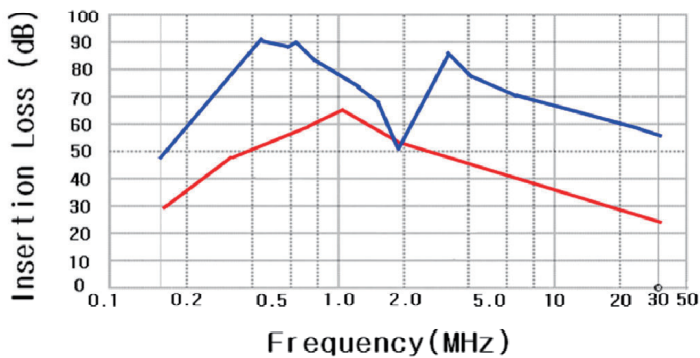
TB6-B010LBEI



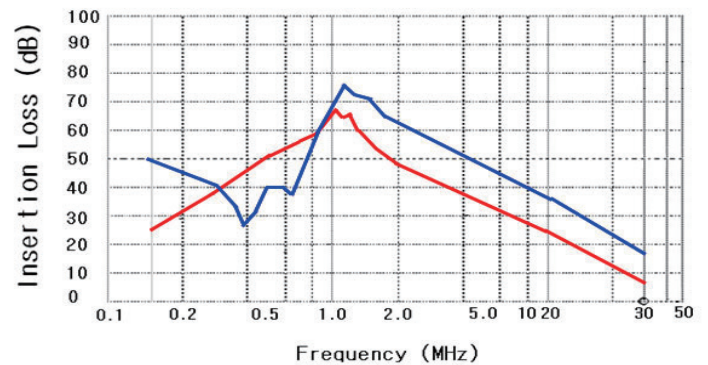
TB6-B020NBDC



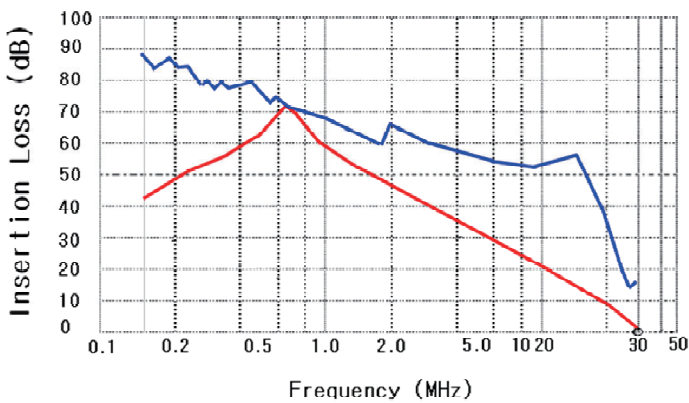
TB6-B030NBDC



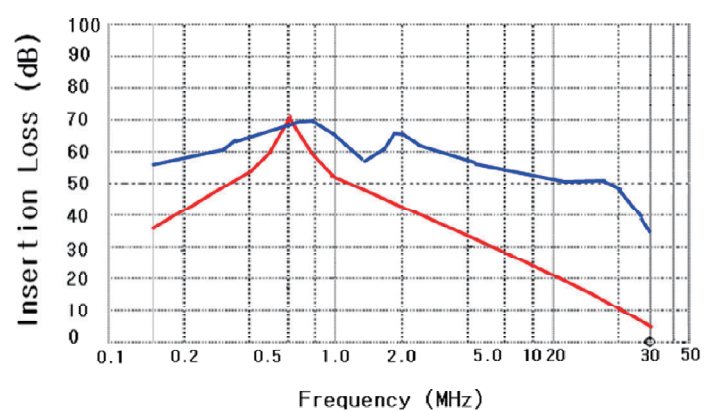
TB6-B040A*



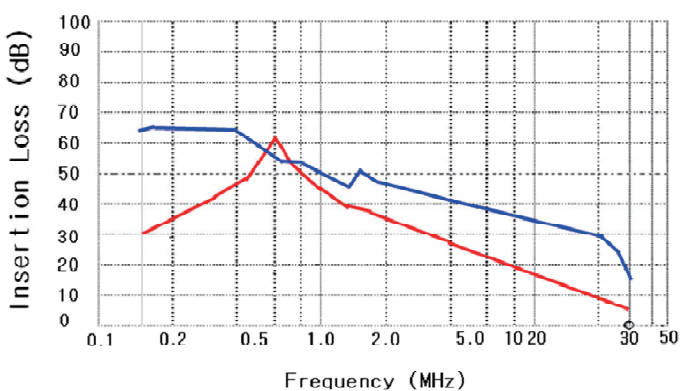
TB6-B060LA*



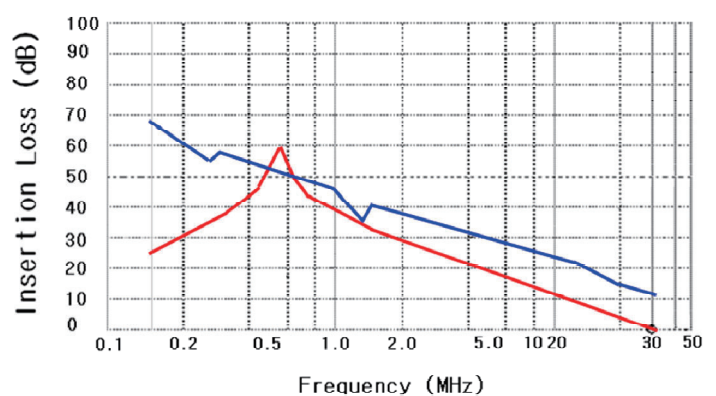
TB6-B080LA*



TB6-B100LA*



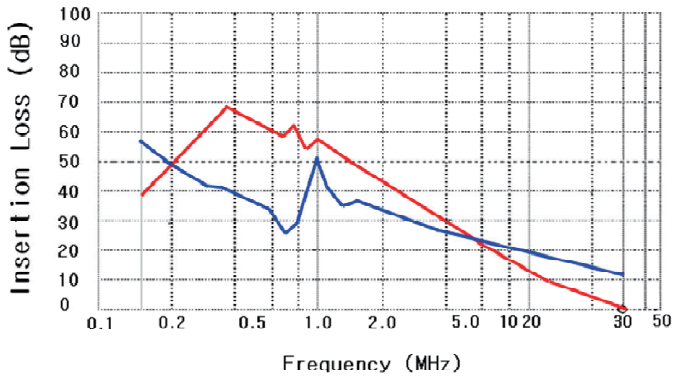
TB6-B150LA*



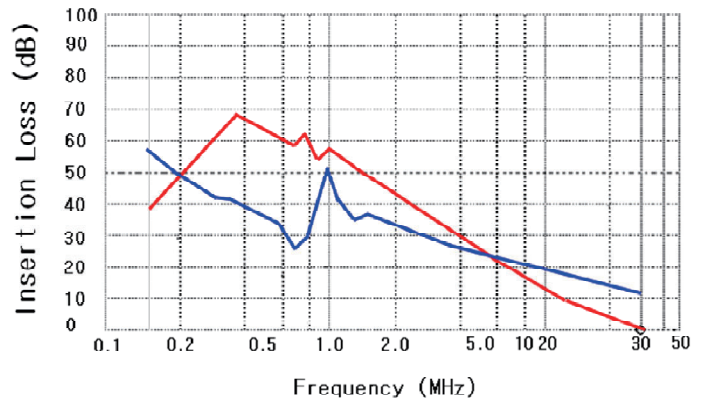
Common mode (—)

Differential mode (—)

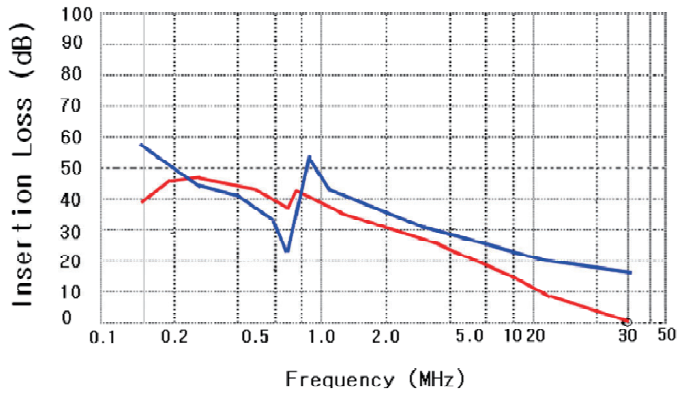
TB6-B200LB*



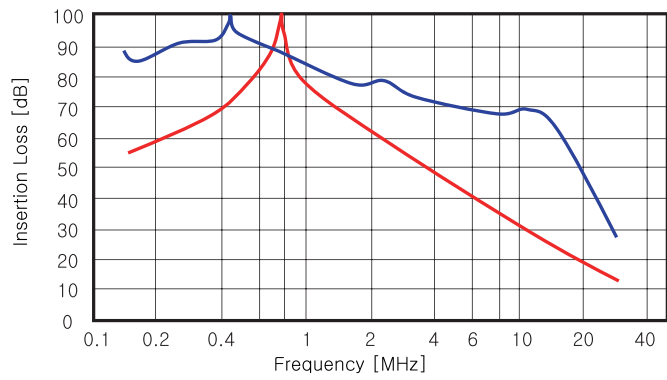
TB6-B250LB*



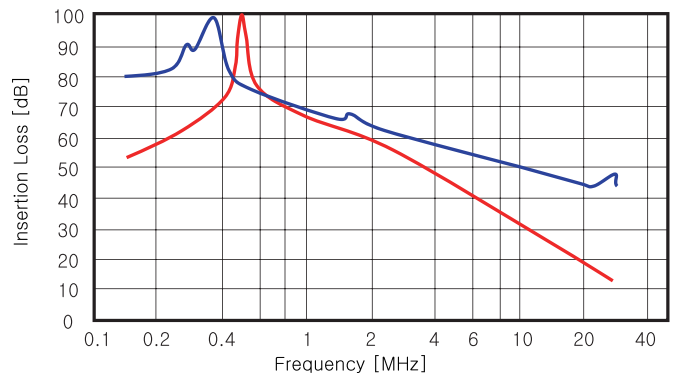
TB6-B400LB*



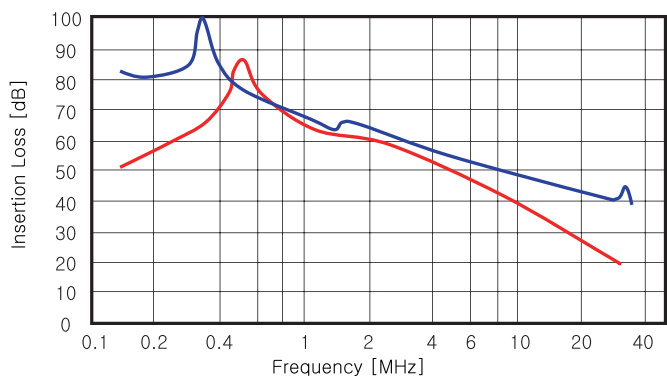
TB6-B060LASH



TB6-B080LASH



TB6-B100LASH



TB6-B150LASH

