

# EMI/EMC FILTER

## TY1/SQ5 SERIES

SQ5 : 



### FEATURES

- 3-phase, 4-line type.
- Good shield effect by using metal case.
- Epoxy molded for reliability.
- Compact and economical.

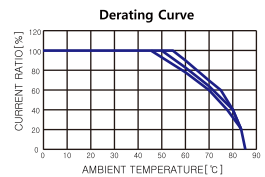
※ UL Listed : SQ5-T16 Only

### APPLICATIONS

- Digital equipments.
- Suitable for FA equipments.
- Computerized washing machines.
- Industrial equipments like UPS, inverters, converters.

## SPECIFICATIONS

Model	Rated Voltage (AC)	Rated Current	Leakage Current (420V AC)	Operating Temperature
TY1-F03	420V	3A	2.6mA max.	-25°C to + 85°C Including temperature rise
TY1-F08	420V	8A	2.6mA max.	
SQ5-T/F16	420V	16A	3.4mA max.	



Note : Test voltage : 1500V AC one minute, line to earth  
 Insulation Resistance : 300 Mohm min. at 100V DC  
 Voltage Drop : 1V max. at rated current  
 Weight : 250g for TY1-Series  
 1450g for SQ5-Series

#### ■ Model Number Construction

TY1

|

Case Style/3-Phase Filter  
 TY1: See Dimension next page  
 SQ5: See Dimension next page

F

|

Input/Output Terminal Style  
 F : Faston Tab #250  
 T : M4 Stud

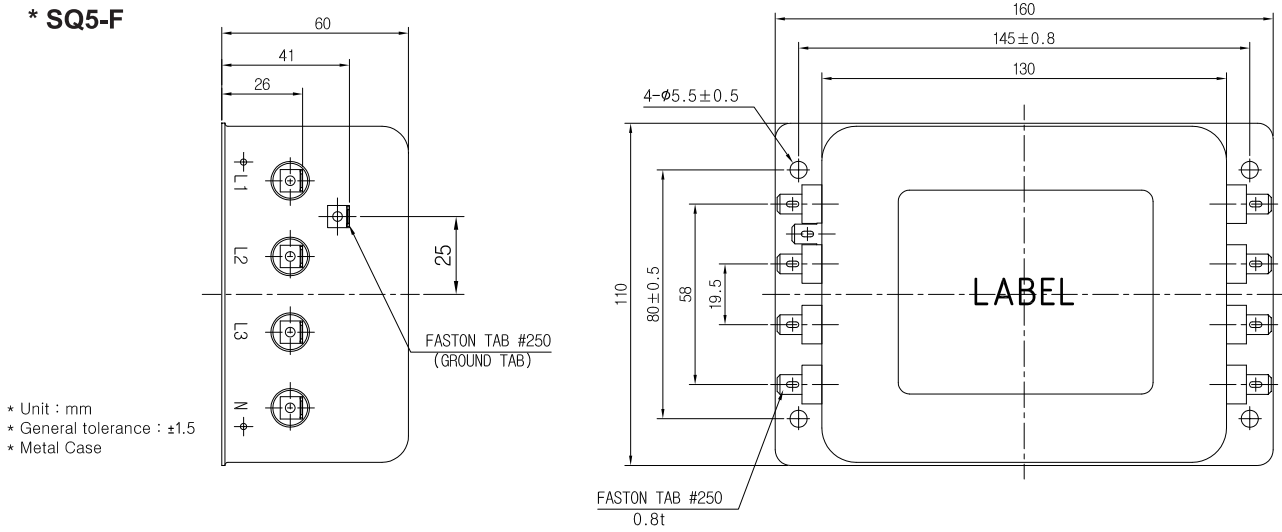
03

|

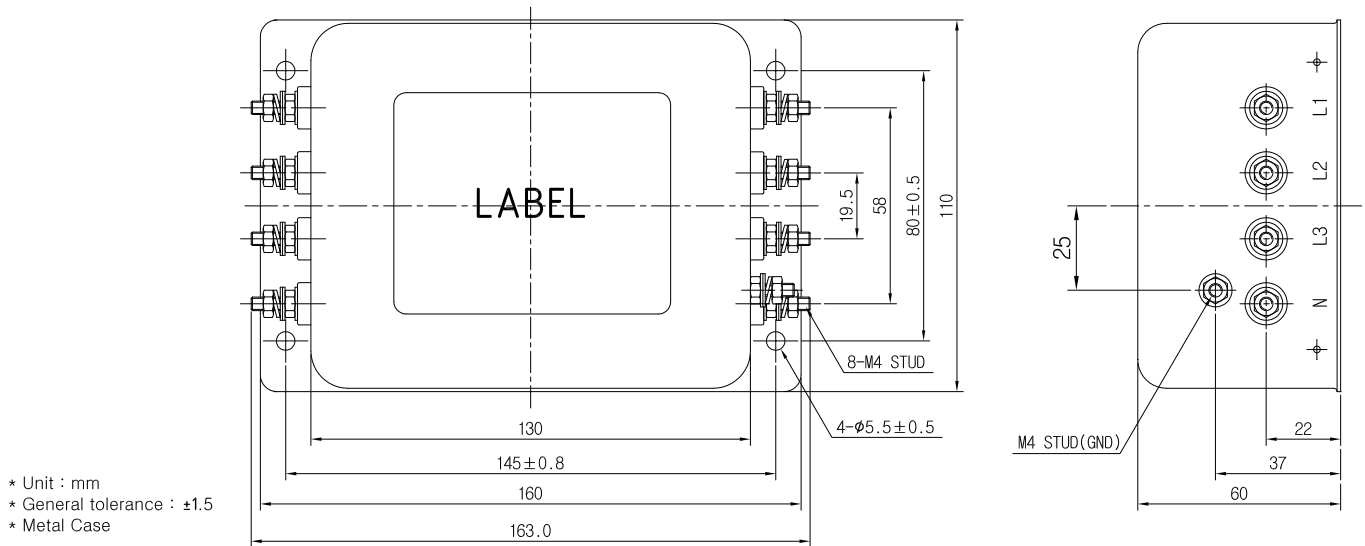
Current Rating : AC rms  
 03 : 3 amp (TY1-Series Only)  
 08 : 8 amp (TY1-Series Only)  
 16 : 16 amp (SQ5-Series Only)

# Shapes and Dimensions

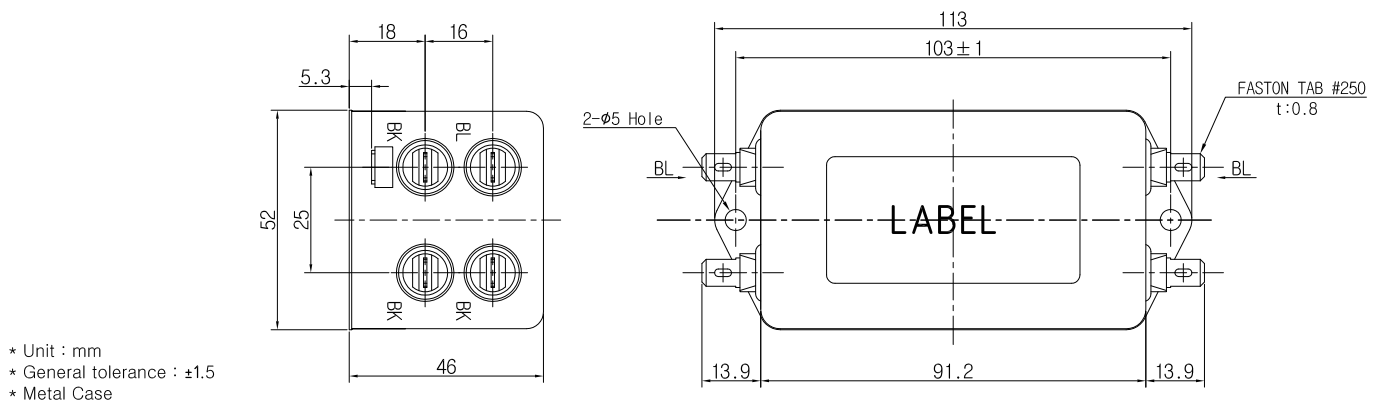
## \* SQ5-F



## \* SQ5-T

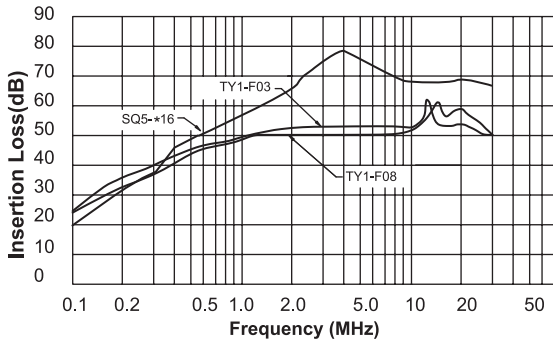


## \* TY1-T

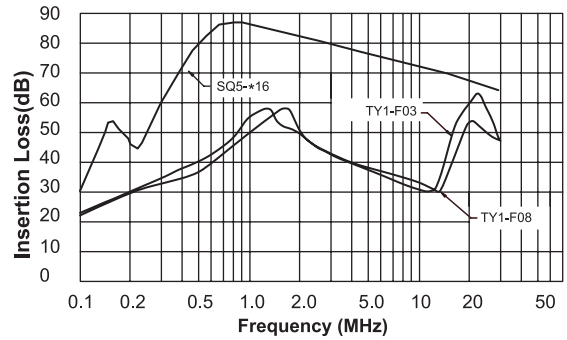


# Attenuation Characteristics

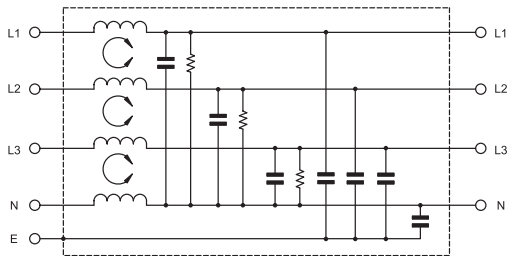
## ● Common Mode



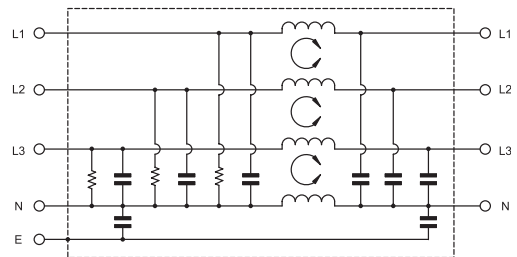
## ● Differential Mode



## ● Circuit Diagram (TY1 Series)



## ● Circuit Diagram (SQ5 Series)



## ● Measurement configuration

