

# EMI/EMC FILTER

**TB6-B** SERIES : Large Current Capacity II (400~800A)



## Features

- 3-Phase filters(Potted with epoxy resin)
- Good shield effect by using metal case
- Excellent filtering characteristics for both differential mode and common mode
- Safety : CE

## Applications

- Industrial equipment such as CNC machine, inverter, converter, telecommunication equipment, FA equipment, elevator, etc.

## Specifications

MODEL	Rated Voltage Max. AC	Rated Current Max.	Leakage Current Max.	Operating Temperature
TB6-4400BDA2T	3Φ X 440V	400A	85mA	-25°C to +105°C Including temperature rise <b>Derating Curve</b> 
TB6-4500BDA2T		500A		
TB6-4600BDA2T		600A		
TB6-4700BDA2T		700A		
TB6-4800BDA2T		800A		

Note

Test Voltage: 3000VDC for 1 minute, line to ground

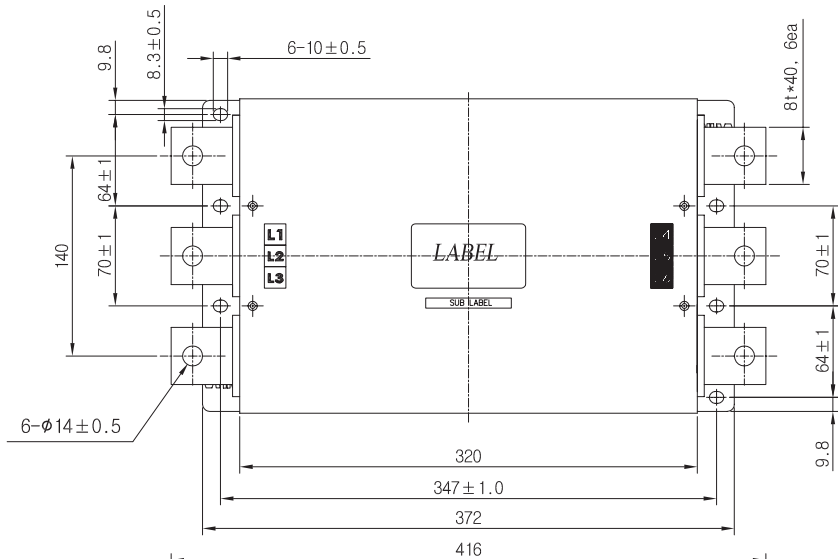
Insulation Resistance: 300MΩ minimum at 100VDC, line to ground

## Model Number Construction

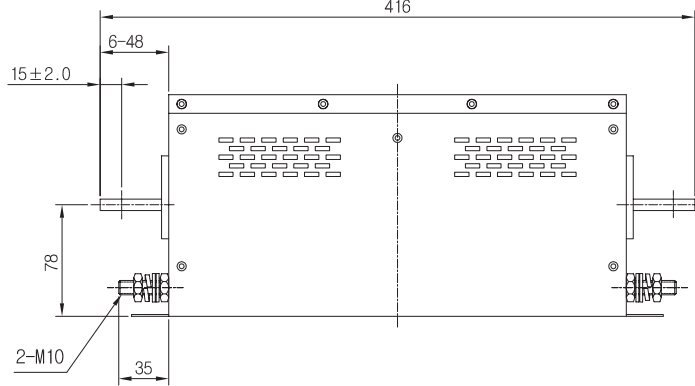
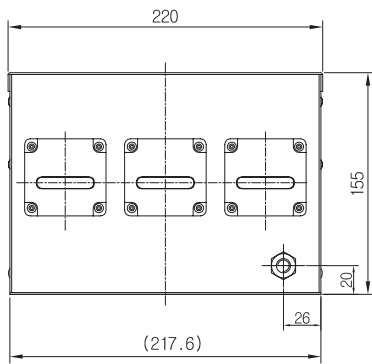
TB6	4	400	BDA2T
Series name : 3 Phase, 3 Line Filter	Rated Voltage 4 = 440V	Rated Current 400 = 400 A 500 = 500 A 600 = 600 A 700 = 700 A 800 = 800 A	The number of core(s) B = 2 Cores D = Circuit Type A = X-Cap 19.8uF 2 = Y-Cap 0.22uF T = Suffix

# Shapes and Dimensions

TB6-4\*\*\*BDA2T



- \* Unit : mm
- \* General tolerance : +3.0
- \* Plastic Case

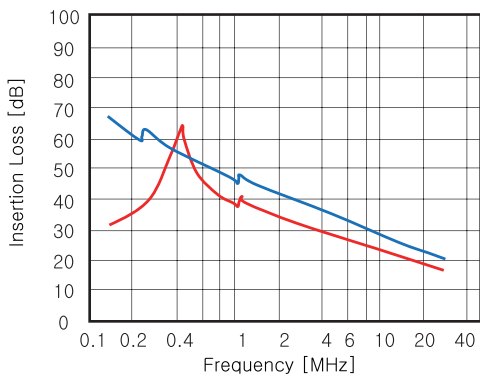


## Attenuation Characteristics

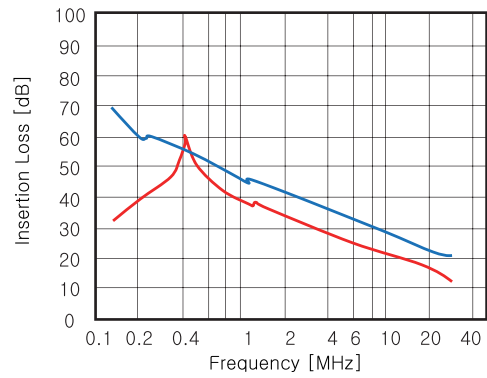
Common mode ( ——— )

Differential mode ( ——— )

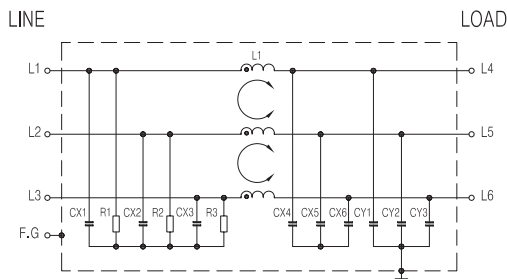
TB6-4400/4500/4600BDA2T



TB6-4700/4800BDA2T



## Circuit Diagram



## Measurement Configuration

